

Institution of
**MECHANICAL
ENGINEERS**

I OPEN DAY COLEGIO INGENIEROS INDUSTRIALES CANARIAS ORIENTAL



COIICO
INGENIEROS
INDUSTRIALES

COLEGIO CANARIAS ORIENTAL

17:00 horas. Presentación de IMEchE UK: Alex Atkins

17:15 horas. Presentación de IMEchE Iberia: Luis Talavera

17:30 horas. Presentación de IMEchE Canaries: Jaime Gervas

IMPROVING THE WORLD THROUGH ENGINEERING.

Institution of
**MECHANICAL
ENGINEERS**

Alex ATKINS
Deputy Chair
IMEchE Iberia Committee



Alex ATKINS
Deputy Chair

Improving the world through engineering



COMMONWEALTH OF NATIONS

- Antigua and Barbuda
- Australia
- The Bahamas
- Bangladesh
- Barbados
- Belize
- Botswana
- Brunel Darussalam
- Cameroon
- Canada
- Cyprus
- Dominica
- Fiji Islands
- The Gambia
- Ghana
- Grenada
- Guyana
- India
- Jamaica
- Kenya
- Kiribati
- Lesotho
- Malawi
- Malaysia
- Maldives
- Malta
- Mauritius
- Mozambique
- Namibia
- Nauru
- New Zealand
- Nigeria
- Pakistan
- Papua New Guinea
- Rwanda
- St. Kitts and Nevis
- St Lucia
- St Vincent & The Grenadines
- Samoa
- Seychelles
- Sierra Leone
- Singapore
- Solomon Islands
- South Africa
- Sri Lanka
- Swaziland
- United Republic of Tanzania
- Tonga
- Trinidad and Tobago
- Tuvalu
- Uganda
- United Kingdom
- Vanuatu
- Zambia
- Zimbabwe



ENGINEERING COUNCIL

Professional titles

The Engineering Council holds the national register for the professional titles:

[-Engineering Technician \(EngTech\)](#)

[-Incorporated Engineer \(IEng\)](#)

[-Chartered Engineer \(CEng\)](#)

[-Information and Communication Technology Technician \(ICTech\)](#)

The titles are all protected by civil law under our Royal Charter and can only be used by individuals currently on the national register.

Registration is renewable annually, through membership of a [professional engineering institution](#).





IMECHE

Institution of
**MECHANICAL
ENGINEERS**

EC Professional Eng. Institutions

Institution of Agricultural Engineers (IAgrE)

Institution of Civil Engineers (ICE)

Institution of Chemical Engineers (ICHEM)

Institution of Engineering Designers (IED)

Institution of Engineering and Technology (IET)

Institute of Explosives Engineers (IExpE)

Institution of Fire Engineers (IFE)

Institution of Gas Engineers and Managers (IGEM)

Institute of Highway Engineers (IHE)

Institute of Healthcare Engineering and Estate Management (IHEEM)

Institution of Lighting Professionals (ILP)

Institute of Marine Engineering, Science & Technology (IMarEST)

Institution of Mechanical Engineers (IMechE)

Institute of Measurement and Control (InstMC)

Institution of Royal Engineers (InstRE)

Institute of Acoustics (IOA)

Institute of Materials, Minerals and Mining (IOM3)

Institute of Physics (IOP)

Institute of Physics and Engineering in Medicine (IPEM)

Institution of Railway Signal Engineers (IRSE)

Institution of Structural Engineers (IStructE)

Institute of Water

IMPROVING THE WORLD THROUGH ENGINEERING.

Institution of
**MECHANICAL
ENGINEERS**

Luis TALAVERA
Honorary Secretary
IMEchE Iberia Committee



Luis TALAVERA
Honorary Secretary



Improving the world through engineering

IMECHE GENERAL INFORMATION



- The Institution of Mechanical Engineers (IMechE) is an independent professional association and learned society headquartered in London, United Kingdom, that represents mechanical engineers and the engineering profession.
- The IMechE was established in 1847 and has some of the world's greatest engineers in its history books.
- It currently has over 115,000 members in 140 countries, representing mechanical engineers involved in a diversity of fields.
- The IMechE has a number of committees that work to promote and develop thought leadership in different industry sectors.
- The Institution has 8 divisions: - Aerospace, Automobile, Biomedical Engineering Association, Construction & Building Services, Manufacturing Industries, Power Industries, Process Industries and Railway

LEARNING & DEVELOPMENT

Institution of
**MECHANICAL
ENGINEERS**

NEAR YOU
REGIONAL ACTIVITIES,
SUPPORT AND SERVICES
WHEREVER YOU ARE
GLOBALLY



Near YOU

Our worldwide network delivers a diverse range of high quality activities and services wherever you are. Each year, active volunteers organise over 1,000 events globally for members and the public.

Find an event near you.

Go ▶

<https://nearyou.imeche.org/home>

United Kingdom

Europe

Middle East and Africa

North East Asia

South East Asia

Southern Asia

Oceania

Americas

Helping talented technical professionals reach their full potential

LEARNING & DEVELOPMENT

IMechE Iberian Committee

Institution of
**MECHANICAL
ENGINEERS**



Javier RUBIO
Industrial Liaison Officer South
[Send a message](#)



José Mº GARTEIZ
Honorary Treasurer
[Send a message](#)



Hugo DE ALMEIDA ROLIM
Young Member Representative
[Send a message](#)



Jaime GERVAS
Canary Islands Representative
[Send a message](#)



Paul RILEY
Industrial Liaison Officer North
[Send a message](#)



Alex ATKINS
Deputy Chair
[Send a message](#)



Luis TALAVERA
Honorary Secretary
[Send a message](#)



Peter ASTLEY
Member Representative
[Send a message](#)

<https://nearyou.imeche.org/near-you/Europe/Iberia/contact-us>

Helping talented technical professionals reach their full potential

IMPROVING THE WORLD THROUGH ENGINEERING.

Institution of
**MECHANICAL
ENGINEERS**

Jaime GERVAS
Canary Islands Rep.
IMEchE Iberia Committee



Jaime GERVAS
Canary Islands Rep

Improving the world through engineering



IMECHE CANARY ISLANDS REGION GENERAL INFORMATION



Welcome to IMechE Iberia!

The IMechE Iberia Group has brought together university students, new graduates, CEng and experienced engineers from across Spain and Portugal, creating one of the most dynamic and proactive groups within the European Region.

We are always looking for people who are willing to work overseas, or have an innovative idea, challenge, competition, lecture or visit of interest to members.

ENGINEERING COUNCIL

Engineering Council & AIPE new APA

On the big day of [#AIPE](#), we were fortunate to have the presence of [David Clark](#), responsible for international relations of the [Engineering Council](#), a great example of an engineering certification body, which has more than 250,000 certified professionals. Of these, 20% are outside the UK.

To be a Professional Engineer by the Engineering Council, knowledge is not enough, you need to be responsible, know how to manage and lead, have communication skills and interpersonal skills.

<https://lnkd.in/eKShRX8M>

<https://youtu.be/bD1IGZRSPso>





ENGINEERING COUNCIL

Engineering Council & AIPE new APA

On 20 October 2022 the Engineering Council signed Admissions Pathway Agreements (APA) with Spanish professional bodies Asociación de Ingenieros Profesionales de España (AIPE) , which will facilitate the mobility and recognition of engineering professionals between the UK and Spain.

<https://www.engc.org.uk/international-activity/european-recognition/mutual-recognition-agreement-aipe-and-aqpe-spain/>

ENGINEERING COUNCIL

Engineering Council & AIPE

Recognising that the competency-based registration assessments for Engineering Council and AIPE/AQPE are substantially equivalent, these APAs aim to minimise duplicating assessment processes for all professional engineering titles.

All PEIs licensed by the Engineering Council to register engineers and technicians may participate in the agreement.

UK engineering professionals seeking registration with [AIPE/AQPE](#) should download the appropriate application form found at the bottom of this page, and send it to international@engc.org.uk together with the relevant documentation and written confirmation we have their permission to contact their PEI(s) to check their current standing with them. We will then send the validated form to AIPE/AQPE who will work directly with the applicant from that point.

Spanish engineering professionals should contact the relevant Spanish body for further details.

IMECHE IBERIAN GROUP

Institution of
**MECHANICAL
ENGINEERS**

Membership process

Welcome to IMechE Iberia!

The IMechE Iberia Group has brought together university students, new graduates, CEng and experienced engineers from across Spain and Portugal, creating one of the most dynamic and proactive groups within the European Region.

Leading the way is very demanding, so we are always looking for people who are willing to help out with our events or have an innovative idea, challenge, competition, lecture or visit that they think might be of interest to their fellow members.

WHAT KIND OF ENGINEER ARE YOU?

Aspirational? Professional?
Skilled? Knowledgeable?

Join today at:
www.imeche.org/membership

and find out more about the
benefits to your profession.

Supporting
improvement in the industry

Supporting
learning
in the industry



IMECHE IBERIAN GROUP

Institution of
**MECHANICAL
ENGINEERS**

Objetives

The main objective of IMechE Iberia is to provide value to each and every one of its 450 members (27% of which are women) by means of:

- Conferences and technical lectures on engineering related topics
- Industrial visits to leading engineering companies: Airbus, Petronor, Endesa.
- Social networking events: dinners, social gatherings, etc.
- Innovative challenges and competitions: Kilimanjaro Challenge, EngNow-17, Formula Student Learning Experience, Inspiring Girls, etc.

WHAT KIND OF ENGINEER ARE YOU?

Aspirational? Professional?
Skilled? Knowledgeable?

Join today at:
www.imeche.org/membership

and find out more about the
value that is your profession.

Imperial College
www.imperial.ac.uk

Imperial College
London
2017



IMECHE IBERIAN GROUP

Institution of
**MECHANICAL
ENGINEERS**

Our ultimate goals are:

- To promote technical and professional development of IMechE members in Iberia, through meetings and communication, by encouraging members to discuss papers, through the study of local engineering practice
- To achieve closer personal acquaintance and spirit of cooperation amongst members
- To provide a local point of contact with local engineering societies, located in Iberia, on all matters of mutual professional and technical concern
- To actively seek to promote the status of engineering within Iberia and the wider European community.

WHAT KIND OF ENGINEER ARE YOU?

Aspirational? Professional?
Skilled? Knowledgeable?

Join today at:
www.imeche.org/membership

and find out more about the
benefits to your profession.

Support your
profession at:
www.imeche.org

Support your
profession
at:
www.imeche.org



LEARNING & DEVELOPMENT

Institution of
**MECHANICAL
ENGINEERS**

MEMBERSHIP AND REGISTRATION

JOIN US AND BE PART OF A
GLOBAL NETWORK OF OVER
**115,000 EXCEPTIONAL
ENGINEERS IN 140 COUNTRIES.**

Become a member

Membership of the Institution of Mechanical Engineers connects you to the world of mechanical engineering.

Whether you are working towards professional registration, wish to progress to a different category of membership or simply have an interest in the world of engineering - we can support you.

<https://www.imeche.org/membership-registration/become-a-member>

Helping talented technical professionals reach their full potential



Chartered Engineer (CEng)

Chartered Engineers develop solutions to complex engineering problems using new or existing technologies, and through innovation, creativity and technical analysis. Their academic knowledge is at master's level or equivalent.

[Find out more](#)



Fellow (FIMechE)

Fellowship is a mark of exceptional commitment, knowledge and experience in mechanical engineering, and is the senior class of membership for professionally registered engineers. It also recognises engineers' contributions to the profession and the Institution.

[Find out more](#)



Incorporated Engineer (IEng)

Incorporated Engineers maintain and manage applications of current and developing technology, and may undertake engineering design, development, manufacture, construction and operation. Their academic knowledge is at bachelor's level or equivalent.

[Find out more](#)



Affiliate membership

Affiliate membership is free to apprentices or undergraduate students studying science, technology, engineering or mathematics (STEM) subjects.

In addition, anyone who is interested in engineering, including students aged 16 and over studying a STEM subject, can be an Affiliate for an annual fee.

[Find out more](#)



Engineering Technician (EngTech)

Engineering Technicians apply proven techniques and procedures to the solution of practical engineering problems. They are able to demonstrate learning to NVQ/SQV level 3 or similar.

[Find out more](#)



Associate membership (AMIMechE)

Associates already have a degree in a science, technology, engineering or mathematics, and are typically working towards professional registration.

[Find out more](#)

Helping talented technical professionals reach their full potential

**Institution of
MECHANICAL
ENGINEERS**

IMPROVING THE WORLD THROUGH ENGINEERING.

Institution of
**MECHANICAL
ENGINEERS**

Applying under the European Mobility Directive (EMD)

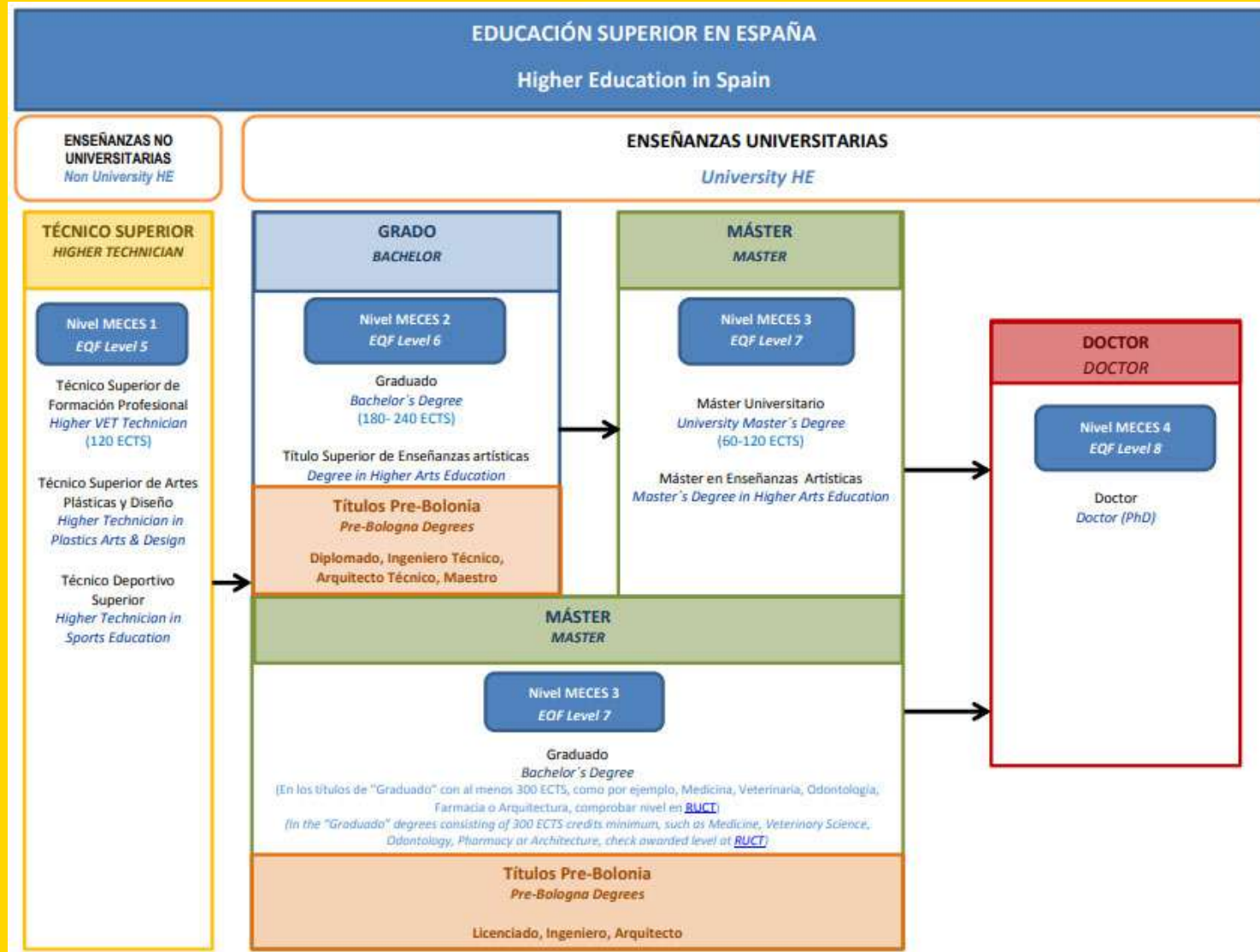
IMechE is no longer able to accept applications under EMD. If you are a registered engineer working in the following countries, please contact the membership team for further advice on routes to membership:

Ireland
Portugal
Switzerland

Improving the world through engineering



HIGHER EDUCATION IN SPAIN



THANK YOU.

Institution of
**MECHANICAL
ENGINEERS**

+ 44 (0)20 7222 7899
enquiries@imeche.org
imeche.org

 /imeche

 /imeche

 /imecheuk

 /imecheteam

 /institution-of-mechanical-engineers